

Carlyle / Carrier 06NA2300S5NA -

Specifications

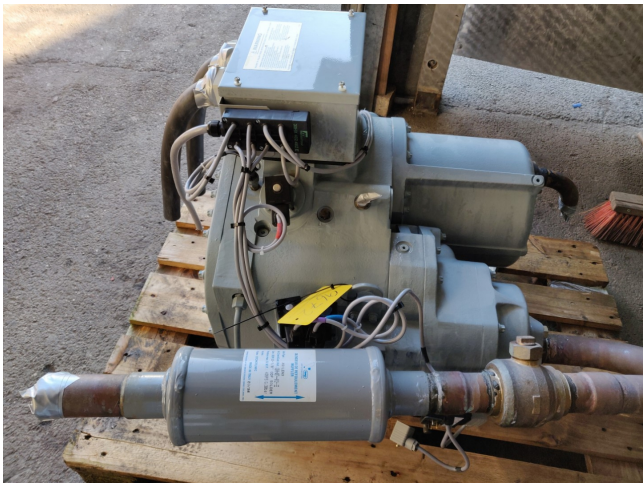
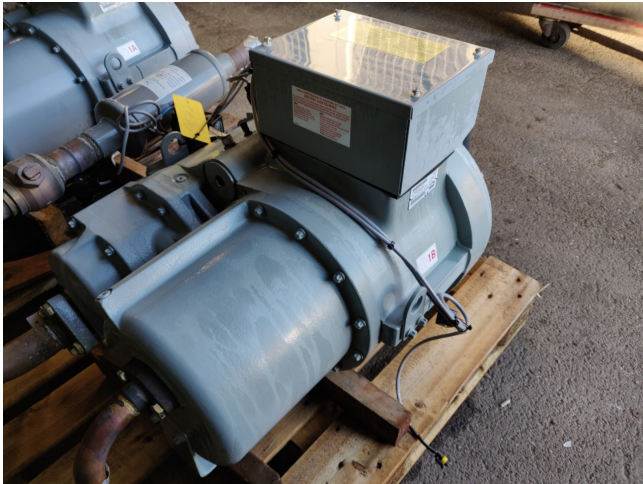
Brand	Carlyle / Carrier
Type	06NA2300S5NA -
Refrigerant	Freon
kW at -10°C/+40°C	288,6*
Condensing pressure switches	✓
Sight Glass	✓
Solenoid Valve	✓
Remarks	*Capacity is approx
Sizes	900x950x600 mm (LxWxH)



Description

Used Carlyle / Carrier 06NA2300S5NA -

Used Carlyle / Carrier 06NA2300S5NA Screw refrigeration compressor // R134a or alternative Freon types / 400-3-50HZ / Displace 510 m³/h - Motor 2900 rpm



Compressors

Reference	Size	I amp.	MHA	LRA	LRA (Y)	LRA (S) 1 cp.	LRA (S) 2 cp.
06NA2146S7N	39	70	95	605	191	220	-
06NA2174S7N	46	90	120	715	226	260	-
06NA2205S7N	56	113	145	856	270	330	420
06NA2255S7N	66	130	175	960	303	380	500
06NA2300SSN	80	156	210	1226	387	445	550
06NA2300S5E	80+	174	240	1265	400	460	600

Legend:

- 06NA - Compressor for air-cooled units
- N - Non-economized compressor
- E - Economized compressor
- INOM - Average current draw of the compressor at Eurovent conditions
- MHA - Must hold amperes (maximum operating current) at 360 V
- LRA - Locked rotor current with across-the-line start
- LRA (Y) - Locked rotor current at reduced current (star/delta start-up mode)
- LRA (S) 1 cp. - Start-up with reduced current with electronic starter (start-up duration 3 seconds max.) for one compressor per circuit
- LRA (S) 2 cp. - Start-up with reduced current with electronic starter (start-up duration 3 seconds max.) for two compressors per circuit